

BASS

WAITING FOR YOUR CALL

COMPOSED & ARRANGED BY REGAN BROUGH

SLOW, FREELY INTERPRETED

MOVING FORWARD ♩ = 92

1-4

5-7

8

A

RUBATO TPT/GTR

GUITAR SETS TEMPO

B

F-9 BALLAD ♩ = 60

D \flat Δ 7

C7 \sharp 9 \sharp 5

9-15

F-9

D7

D \flat Δ 7

C \emptyset 7

F7ALT

B \flat - Δ 7

16

mf

17

G \emptyset 7

G \flat 7 \sharp 11

F-7

18

E7 \sharp 11

E \flat -7

19

D7 \sharp 11

D \flat 9

20

B \flat 7 \flat 9

C

E \flat -9

21

A \flat 7

D \flat Δ 7

22

B \flat 7 \sharp 9 \sharp 5

E \flat -7

23

A \flat 7

A \flat -7

24

D \flat 7sus D \flat 7 \sharp 5

G \flat Δ 7

25

E7 \sharp 11

E \flat -7

26

A \flat 7ALT

D \flat Δ 7

27

G \flat 7

G \emptyset 7

28

C7ALT

29

30

31

32

D

mf

33

G \emptyset 7

G \flat 7 \sharp 11

F-7

34

E7 \sharp 11

E \flat -7

35

D13

D \flat Δ 7

36

C7ALT

E

F-9

37

D \flat Δ 7

C7 \sharp 9 \sharp 5

38

F-9

D7

D \flat Δ 7

39

C \emptyset 7

F7ALT

B \flat - Δ 7

40

41

42

43

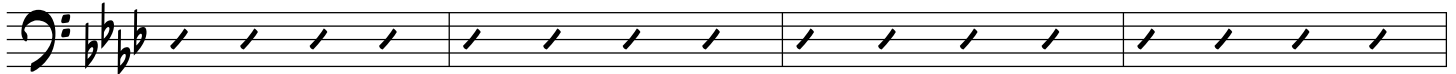
44

BASS

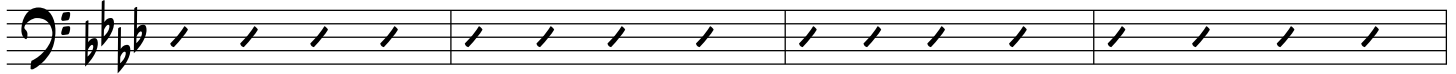
- 2 -

WAITING FOR YOUR CALL

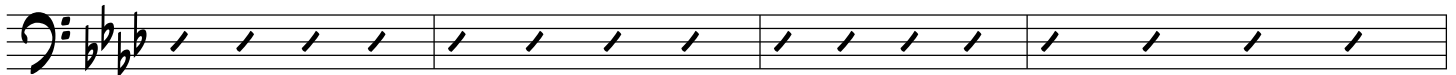
G \emptyset 7 G \flat 7 \sharp 11 F-7 E7 \sharp 11 E \flat -7 D13 D \flat Δ 7 C7ALT



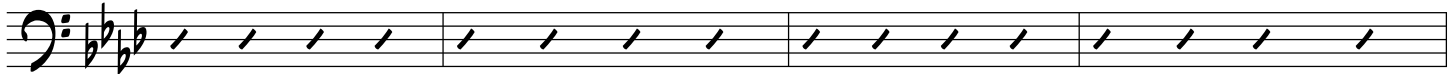
[F] F-9 45 D \flat Δ 7 C7 \sharp 9 46 F-9 D7 D \flat Δ 7 47 C \emptyset 7 F7ALT B \flat - Δ 7 48



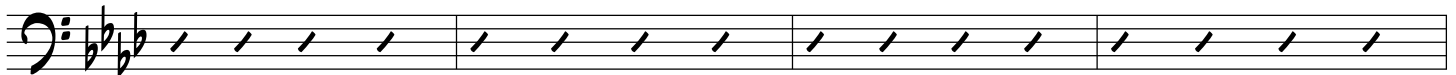
G \emptyset 7 49 G \flat 7 \sharp 11 F-7 50 E7 \sharp 11 E \flat -7 51 D13 D \flat Δ 7 52 B \flat 7ALT



[G] E \flat -9 53 A \flat 7 D \flat Δ 7 54 B \flat 7 \sharp 9 55 E \flat -7 A \flat 7 A \flat -7 56 D \flat 7sus D \flat 7 \sharp 9



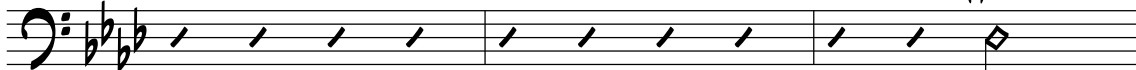
G \flat Δ 7 57 E7 \sharp 11 E \flat -7 58 A \flat 7ALT D \flat Δ 7 59 G \flat 7 G \emptyset 7 60 C7ALT



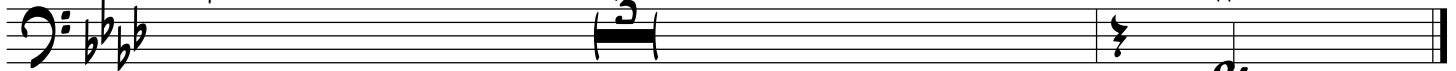
[H] 61 62 63 64



G \emptyset 7 65 G \flat 7 \sharp 11 F-7 66 E7 \sharp 11 RIT. E \flat -7 67 D7 \sharp 11 68



mf 69 70 71
SLOW, FREELY INTERPRETED
TPT/GTR



72-74

ARCO *p* 75