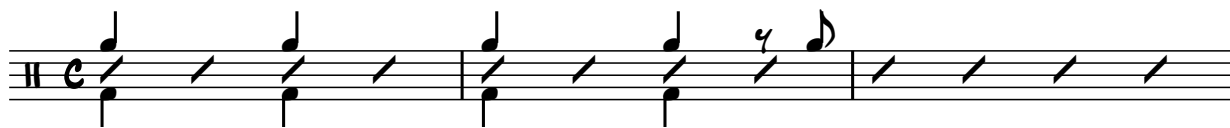


Drums
COMP/ARRANGED - FRAEDRICH

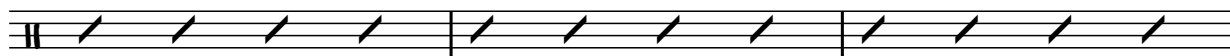
A MINOR MATTER

♩=260 SWING

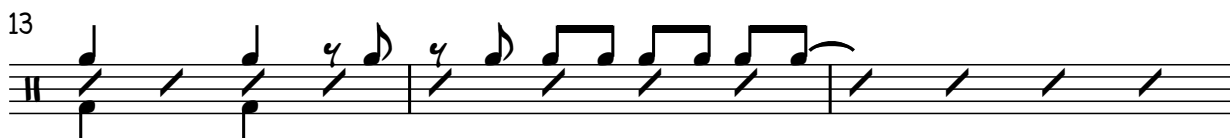
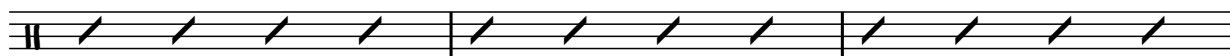
(2012)



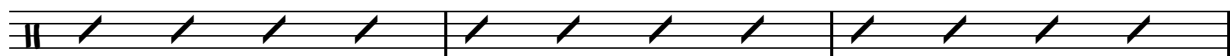
4



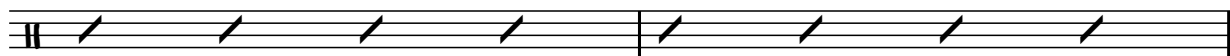
7



16



25



V.S.

(C)

Musical staff for measure 27, showing a drum pattern with quarter notes and eighth notes.

30

Musical staff for measure 30, showing a drum pattern with quarter notes and eighth notes.

33

Musical staff for measure 33, showing a drum pattern with quarter notes and eighth notes, ending with a double bar line.

(D)

Musical staff for measure 36, showing a drum pattern with quarter notes and eighth notes.

38

Musical staff for measure 38, showing a drum pattern with eighth notes and quarter notes.

41

Musical staff for measure 41, showing a drum pattern with quarter notes and eighth notes.

44

Musical staff for measure 44, showing a drum pattern with eighth notes.

47

Musical staff for measure 47, showing a drum pattern with eighth notes.

(E)

SOLOS - BACKGROUNDS LAST X

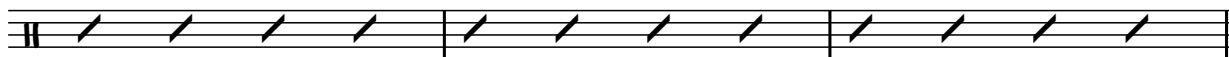
50

Musical staff for measure 50, showing a drum pattern with eighth notes and a repeat sign.

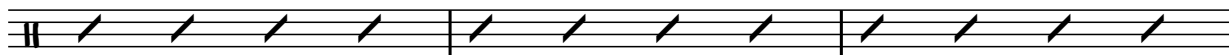
53

Musical staff for measure 53, showing a drum pattern with eighth notes.

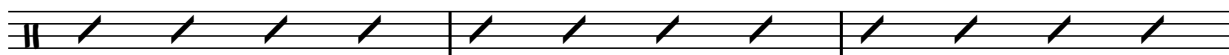
56



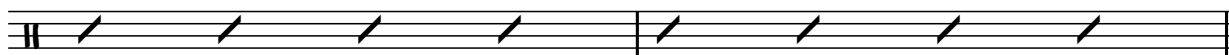
F



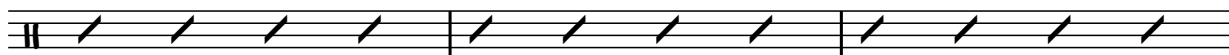
62



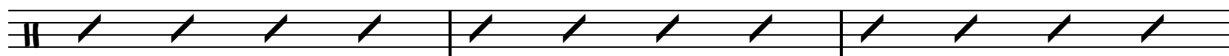
65



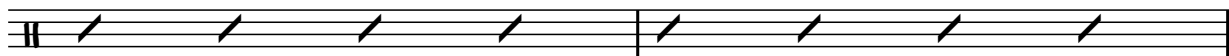
G



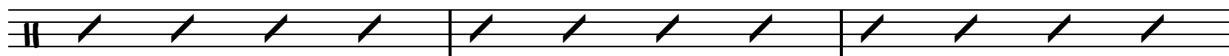
70



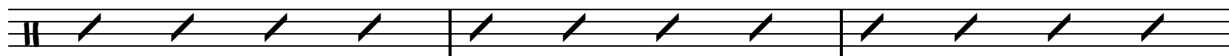
73



H



78



81 | 2.



vs.

84



87



90

OPT. D.S. FOR MORE SOLOS



(D) SAX SOLO



96



99



(J)




104



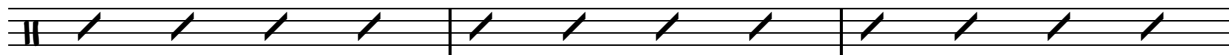
107



(R)



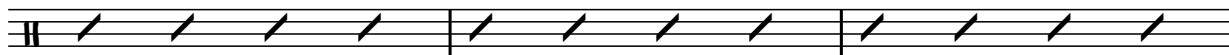
112



115



(L)



120



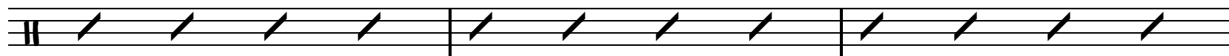
124

(M)

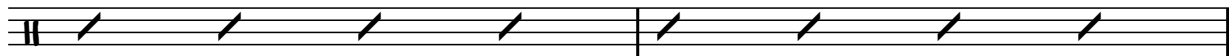
TRUMPET SOLO- BACKGROUNDS LAST X



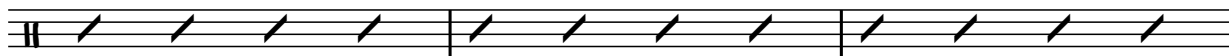
128



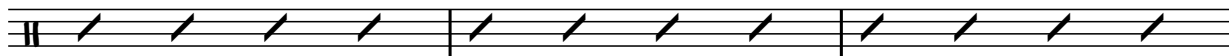
131



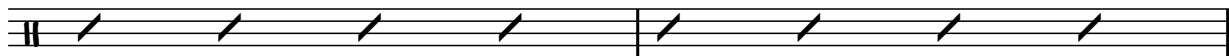
(N)



136



139



VS.

Q

144

147

P

152

155

158

161

164

Q **BIG BUILD TO BAR 207**

170

Musical notation for drum set at measure 170. It shows a snare drum pattern with accents and a cymbal pattern.

172

Musical notation for drum set at measure 172. It shows a snare drum pattern with accents and a cymbal pattern.

(R)

mf

Musical notation for drum set at measure 174, marked with a circled 'R' and 'mf'. It shows a snare drum pattern with accents and a cymbal pattern.

178

Musical notation for drum set at measure 178. It shows a snare drum pattern with accents and a cymbal pattern.

180

Musical notation for drum set at measure 180. It shows a snare drum pattern with accents and a cymbal pattern.

(S)

f

Musical notation for drum set at measure 182, marked with a circled 'S' and 'f'. It shows a snare drum pattern with accents and a cymbal pattern.

186

Musical notation for drum set at measure 186. It shows a snare drum pattern with accents and a cymbal pattern.

188

Musical notation for drum set at measure 188. It shows a snare drum pattern with accents and a cymbal pattern.

(T)

f

Musical notation for drum set at measure 190, marked with a circled 'T' and 'f'. It shows a snare drum pattern with accents and a cymbal pattern.

194

Musical notation for drum set at measure 194. It shows a snare drum pattern with accents and a cymbal pattern.

VS.

196

Musical staff for measure 196, featuring a drum set with various rhythmic patterns and accents.

(U)

Musical staff for measure 197, featuring a drum set with various rhythmic patterns and accents.

ff

202

Musical staff for measure 202, featuring a drum set with various rhythmic patterns and accents.

204

Musical staff for measure 204, featuring a drum set with various rhythmic patterns and accents.

(V)

Musical staff for measure 205, featuring a drum set with various rhythmic patterns and accents.

fff

210

Musical staff for measure 210, featuring a drum set with various rhythmic patterns and accents.

212

Musical staff for measure 212, featuring a drum set with various rhythmic patterns and accents.

(W)

Musical staff for measure 213, featuring a drum set with various rhythmic patterns and accents.

218

Musical staff for measure 218, featuring a drum set with various rhythmic patterns and accents.

220

Musical staff for measure 220, featuring a drum set with various rhythmic patterns and accents.

(X) SHOUT!

226

228

(Y)

234

237

(Z)

242

245

248

VS.

251



252

